

MAHLE

X20

LIGHT. SPORT. SMART.

X20, The new benchmark in the SmartBike industry

Ultracompact, light and smart system that creates a full range of new riding possibilities while making eBikes look & feel indistinguishable from high performance bikes. The latest innovations create the best support at any cadence, whether racing at top speeds or climbing up a mountain. X20 is designed to drive the rider and the whole industry forward.

55 Nm
of torque





Lightest system on the market

With only 3.2 Kg of system weight, including drive unit, inner battery and head unit, the X20 System is the lightest eBike rear hub system on the market.

3.2 kg
total system weight

1.39 kg
X20 drive unit

The power of subtlety

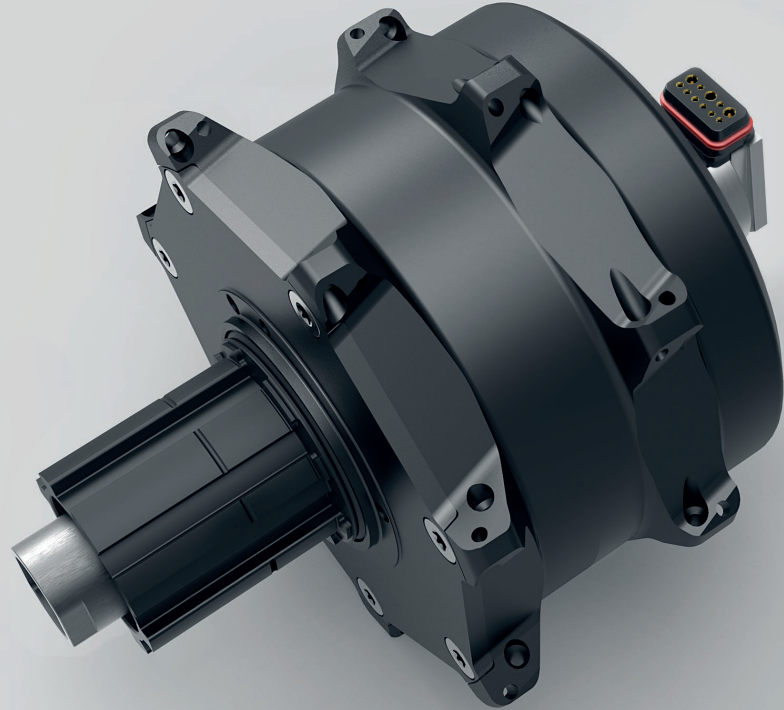
55 Nm of torque and compatible with the EU (25 Km/h) and US (20 Km/h) markets, the X20 drive unit is designed and assembled in Europe to reach a maximum performance level, completely eliminating the drag when maximum assisted speed is exceeded, not penalizing the rider.

Torque

User power meter

Cadence

Monitoring





You set the limits

New 236 Wh/350 Wh internal batteries which can be complemented with a 172 Wh Range Extender, delivering up to 200 Km Autonomy.

Intelligent fast charging system up to 4A charging the battery up to 80% of its full capacity in less than 2 hours.

100 Km
with iX250 main battery*

140 Km
with iX350 main battery*

+60 Km
with Range extender *

*Maximum range in optimal assistance, environment and rider circumstances

An alive system

The new compact Head Unit information system includes BT and ANT+ connectivity, brightness sensor and 3D accelerometer, combining everything you need to know in a single light line.



Create your own experience

Our cutting-edge accessories are the best solutions to enhance your SmartBike, increasing its performance and making it even smarter. The options to customize your eBike are almost limitless.





Everything you need

The new torque and cadence sensor in the bottom bracket allows the eBike to accurately read each watt of power you apply, giving the user the appropriate response thanks to AI and Machine Learning. The system learns from you and adapts to your needs and the environment at any given moment.

The battery, motor and Head Unit features make our system the lightest, smartest and most integrated on the market.

A new generation of SmartBike is now a reality.

The most advanced road experience

The X20's weight to power ratio as well as its autonomy makes X20 the perfect system for road solutions. The way the system is integrated in the frame, the natural pedaling feeling and the functional and minimalistic HMI helps the rider not getting distracted from the road and the ride.

SmartBikes under

10 Kg





Expand your horizons: X20, best solution for gravel

The increase in power combined with its lightness makes X20 a great fit for gravel. For those adventurers, the new battery capacities (iX350 & Range Extender) gives them the autonomy they need.

iX250

about 100 Km range*

iX350

about 140 Km range*

*Maximum range in optimal assistance, environment and rider circumstances

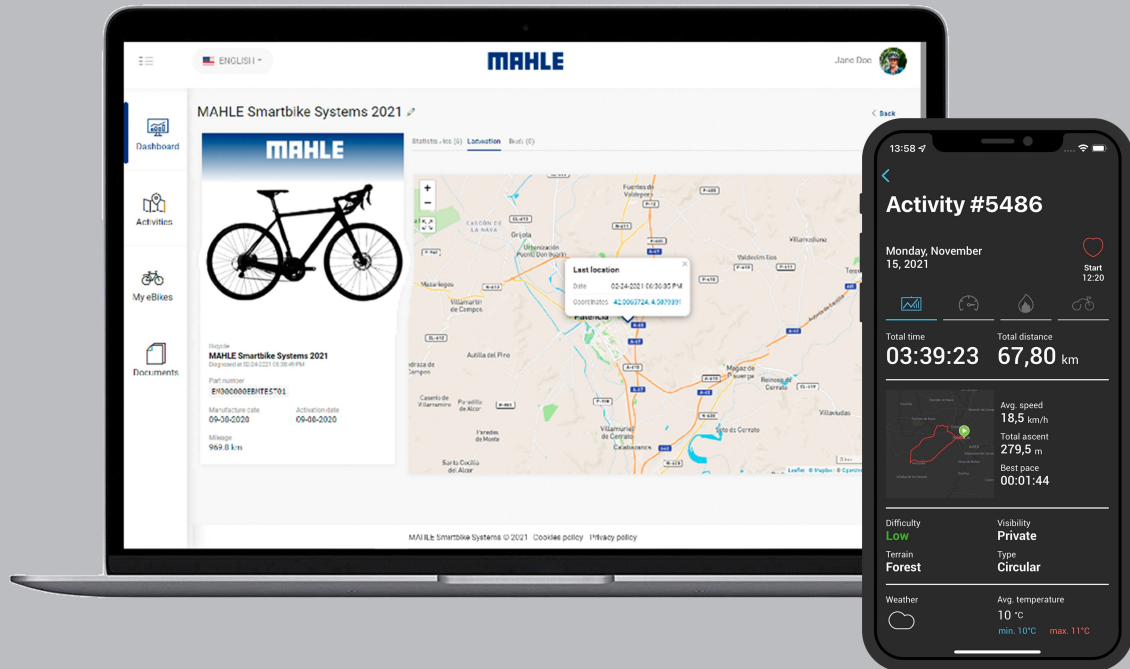
Our Ecosystem

At MAHLE, connectivity is at the heart of the development of the entire SmartBike solution. We believe SmartBikes are the natural evolution of eBikes, where besides the assisted ride through electric motors, they offer the ability to be permanently connected, open to new services that offer continuous system and ride improvements. The new connectivity platform is common to all MAHLE systems and is constantly evolving.

Unified and flawless integration across SmartBike components, accessories, and software.



MAHLE connected ecosystem



At MAHLE, connectivity is at the heart of the development of the entire SmartBike solution. We believe SmartBikes are the natural evolution of eBikes, where besides the assisted ride through electric motors, they offer the ability to be permanently connected, open to new services that offer continuous system and ride improvements. The new connectivity platform is common to all MAHLE systems and is constantly evolving.

Go all the details

Wherever you go, your SmartBike comes along. Our new APP is built as a launch base for new functionalities providing safety, consumption management and ride data analysis. Connect with your SmartBike to adapt and adjust system behavior and performance, get instant information about battery status, customize motor maps, record your activities, access statistics, see bike location and more.

Get an in-depth web experience. Check detailed information about your rides, so you can get a detailed analysis of your routes, comparing data in a visual way, such as elevation, health-related data and exclusive metrics from your eBikes. You can also check your ride in map format and automatically share it with third-party platforms such as Strava™.





Aftersales service

MAHLE SmartBike Systems builds components and systems behind some of the most innovative eBikes in the world. Headquartered in Palencia, Spain, the MAHLE's group bike branch designs hardware and software solutions for eBike manufacturers, dealers and riders. MAHLE SmartBike System's innovative solutions are guided by continuous dialog between the bicycle brands, dealers and riders.

MAHLE Smartbike Systems
C/ Orfebres, 10, Palencia – Spain

France phone (+33) 367 230 022
Germany phone (+49) 715 415 99151
Italy phone (+39) 011 198 25009
Spain phone (+34) 983 441 099
UK phone (+44) 190 290 7424

From 8 am to 6 pm CET
Monday through Friday



Join MAHLE SmartBike Systems Universe



mahle-smartbike.com

MAHLE SmartBike Systems S.L.U.
Los Orfebres 10
Palencia, Spain

mahle-smartbike.com